



VISIT [WWW.GREEN-QUBE.COM/QUICKQUBE](http://WWW.GREEN-QUBE.COM/QUICKQUBE) FOR MORE INFO

## Quick-Qube Expansion Bars: Assembly Instructions

### Expansion Bar Kit:

Corner Brackets x 4



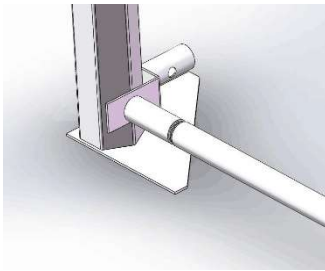
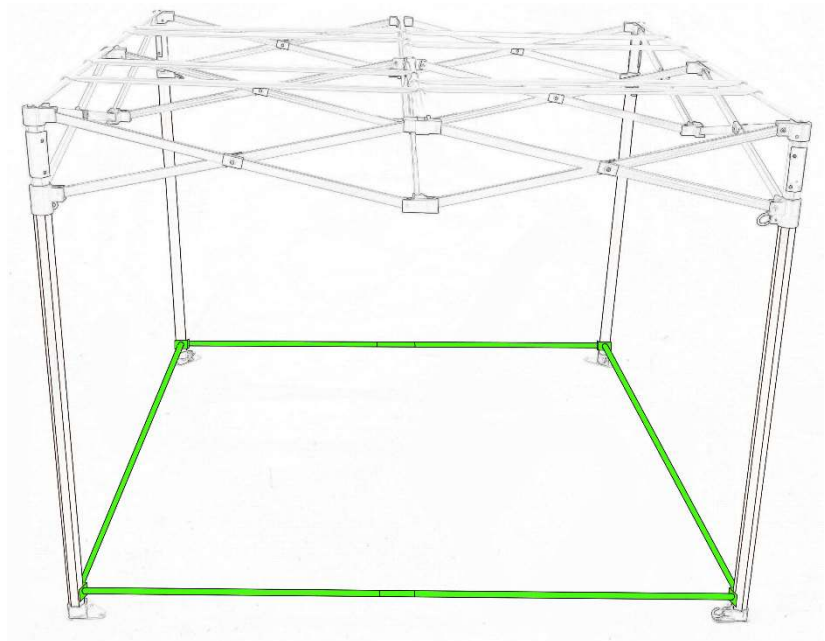
Bar Connectors x 4



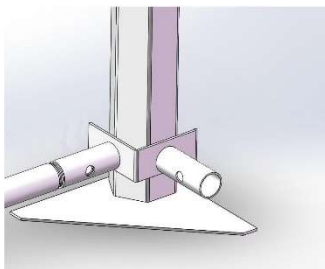
Expansion Bars x 8



1. Start with the tent fully erected – legs extended up with the outer shell on.
2. Begin with one side of the tent: Connect two Expansion Bars together using a Bar Connector to join them in the centre.



3. Connect a Corner Bracket piece to each end of the joined Expansion Bars.



4. Then slot both Corner Brackets onto the Quick-Qube frame legs. You can do this at the base of the frame (as per the diagram above + to the left) or to the mid-point of the frame, sitting on the plastic middle Leg Brackets.

5. Next work your way around the frame, following the above and connecting one side at a time. Your Expansion Bars are now fitted!

FOR MORE DETAILED INSTRUCTIONS & ASSEMBLY VIDEOS visit: [www.green-qube.com/quickqube](http://www.green-qube.com/quickqube)